

CONSIDERATIONS ON CHOOSING A HOUSE PLAN: WHAT YOU NEED TO KNOW ...

Choosing a house plan is more than just an aesthetic exercise, it is a combination of strategy to script the way your life unfolds within four walls and to bridge lifestyle aspirations with the technical and legal realities of the Zimbabwean real estate market. Whether you are building your first home or investing in a development project, the plan you select today determines the future value, functionality and compliance of your property. Consider the legislative framework, current trends, weather conditions and market factors.



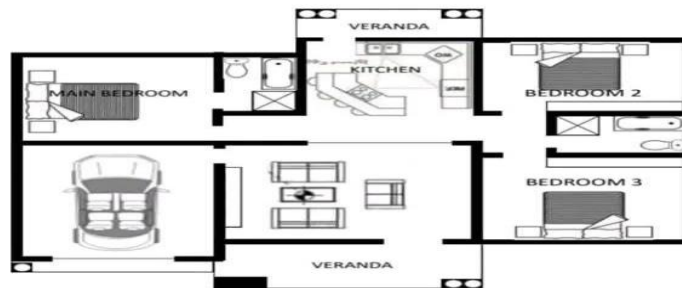
Legislative Reforms

In Zimbabwe, a house plan is a blueprint that must adhere to the Model Building By-laws (1976) and the Regional, Town and Country Planning Act [Chapter 29:12]. In addition to the pre-existing regulatory framework, recent legislative reforms have introduced stricter mandates governing the design and approval of residential architectural plans. Specifically, the updated legislation stipulates that all building plans must now be drafted exclusively by a registered architect to ensure structural integrity and professional accountability.

Current Trends

The focus has shifted from "status symbols" to functional, self-sufficient ecosystems which encompass "off grid" luxury, inclusive and accessible designs as well as climate resilient infrastructure. New designs now feature rooflines optimised for solar gain where 5kA to 10kVA hybrid systems with lithium-ion storage are incorporated in the initial building layout rather than added later. The implementation of the National Disability Policy is also beginning to influence residential blueprints. Raised foundations, thermal regulation and passive cooling are also important considerations in modern Zimbabwean design trends. Moreso, the Securitization

and Digital Title Deeds launched in April 2026 for residential properties means that the land and the immovable improvements have been converted to powerful financial instruments bridging the gap between design and capital growth.



Design wise...

When choosing a house plan, it's essential to align the layout with your family's needs and lifestyle to ensure long-term comfort and functionality as well as affordability of the plan. Start by considering how your home will serve the specific needs of your family now and in the future be it a traditional/ cellular house plan or a contemporary modern style. A cellular house-plan is whereby every singular room has a dedicated purpose with solid doors and walls as physical separators. Despite the enduring appeal of traditional, compartmentalized layouts, contemporary house plans have taken centre stage as the preferred choice for modern living

Contemporary and Modern Styles

Open floor plans create a sense of space and freedom, making areas feel larger and more inviting. This design facilitates better movement and interaction among family members, making it ideal for social gatherings and daily activities. Open floor plan prioritizes connectivity. These styles prioritize simplicity and functionality, which can make a home feel more organized and less cluttered. This aesthetic appeals to many for its classic and elegant look e.g modern designs, allow an abundance of natural light. This not only enhances mood and well-being but also reduces the need for artificial lighting, making spaces feel bright and well ventilated.

Sustainability

With an increasing focus on environmental responsibility, incorporating sustainable features and eco-friendly designs can reduce the ecological footprint of your home. This includes using

materials that have a lower environmental impact and are sourced responsibly. Energy efficiency features such as energy-efficient windows and appliances can significantly lower utility bills over time, offering long-term cost savings. Additionally, many buyers appreciate homes with sustainable practices, enhancing resale value and marketability.



Initiatives by UDCORP!



At the Urban Development Corporation, you are guaranteed of a house plan that meets all the important considerations discussed earlier. Under the Knockmalloch Housing Project, the Corporation designed house plans to suit every lifestyle while meeting building regulations. All plans are pre-approved, legally compliant and features which guarantee a certificate of occupation. The house plans feature modern open floor designs with natural light and flexible spaces that adapt to changing needs. Sustainability and energy efficiency are built into every plan, lowering long-term costs and boosting property value making for both homeowners and investors. Considering these design trends can lead to a more functional, aesthetically

pleasing, and environmentally responsible home, ultimately improving quality of life and future property value. Don't leave your future to chance. Choose a plan that matches the prestige of a development...with UDCORP!

Prepared by: Allen Mashuro and Modesta Mutetwa (UDCORP)
Edited by: Shingai T. Kawadza (UDCORP)
May, 2026